

## **Late changes to Draft District Local Plan**

The following two changes to Item 6 – Local Plan Review, Appendix A Draft Local Plan for Public Consultation have been recommended by consultants Centre for Sustainable Energy who are producing a Renewable Energy Assessment of the District for the Council. Both changes are designed to strengthen the Local Plan's policies for achieving Carbon Neutral 2030. Unfortunately the wording was not ready to be incorporated into the Draft Plan before the publication of the agenda last week.

1/ Delete Delivery Policy ES2 (page 180) and replace with the following revised wording:

### **Delivery Policy ES2: Renewable or low carbon energy generation**

Decentralised renewable and low carbon energy schemes will be supported and encouraged, and will be approved where their impact is, or can be made, acceptable.

In determining applications for renewable and low carbon energy, and associated infrastructure, the following issues will be considered:

- a) the contribution of the proposals, in the light of the Council's pledge to be carbon neutral by 2030, to cutting greenhouse gas emissions and decarbonising our energy system.
- b) the impact of the scheme, together with any cumulative issues, on landscape character, visual amenity, water quality and flood risk, historic features, recreation, biodiversity and, where appropriate, agricultural land use, aviation and telecommunications.
- c) the impact on users and residents of the local area, including where relevant, shadow flicker, air quality, vibration and noise.
- d) the direct benefits to the area and local community.

Ground-mounted solar energy developments are more likely to be supported in areas identified as technically suitable in principle as set out on the Policies Map. Outside these areas, applicants will need to provide a clear justification for the suitability of the chosen development site for solar development at the relevant scale.

Proposals for renewable energy proposals within the AONB will be encouraged, however, where development proposals will affect the AONB, the benefits of development must demonstrably outweigh any harm to the designated area or its setting.

Additionally, proposals for wind energy development:

- should be located within a suitable area as indicated on the Policies Map;
- are more likely to be supported if they fall within Landscape Character Areas of lower sensitivity to the relevant development scale as indicated on the Policies Map;

- may also be suitable in principle if they are located in large new development sites, existing industrial estates or if they are proposed in neighbourhood plans or through community energy schemes; and it can be clearly demonstrated that the scale of the development is appropriate to the site, the benefits of the development outweigh any harm to the local community, and that the development complies with the relevant criteria in Policy ES2.

Where appropriate, provision should be made for the removal of the facilities and reinstatement of the site should it cease to be operational.

Particular support will be given to renewable and low carbon energy generation developments that are led by, or meet the needs of local communities.

2/ Add the following new policy to the Draft Local Plan:

### **Policy x: Heat supply**

Development proposals should include a communal low-temperature heating system where viable.

The heat source for the communal heating system should be selected in accordance with the following heating hierarchy:

1. connect to local existing or planned heat networks
2. use of zero-carbon renewable heat or CHP
3. use of local ambient or secondary heat sources (in conjunction with heat pumps\*, if required)

\*heat pumps assumed to become zero-carbon when grid decarbonises

Where a local heat network is planned but not yet in existence or connection is not currently viable, but may become viable in the future, the development should be designed to allow for the cost-effective connection and supply at a later date. In this case the heat should be supplied according to steps 2 and 3 of the above hierarchy.

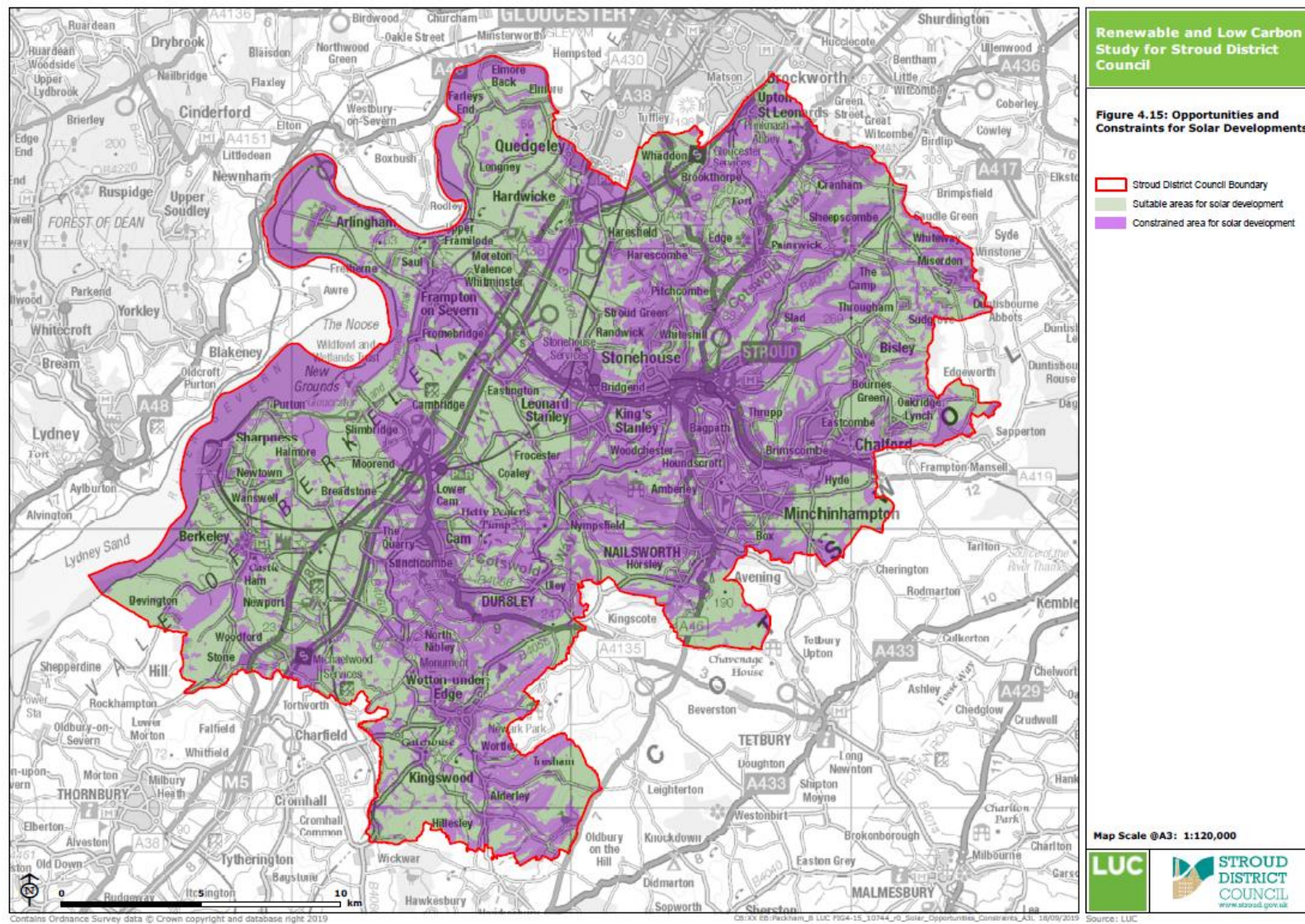


Figure 11: Opportunities and constraints for solar developments



